



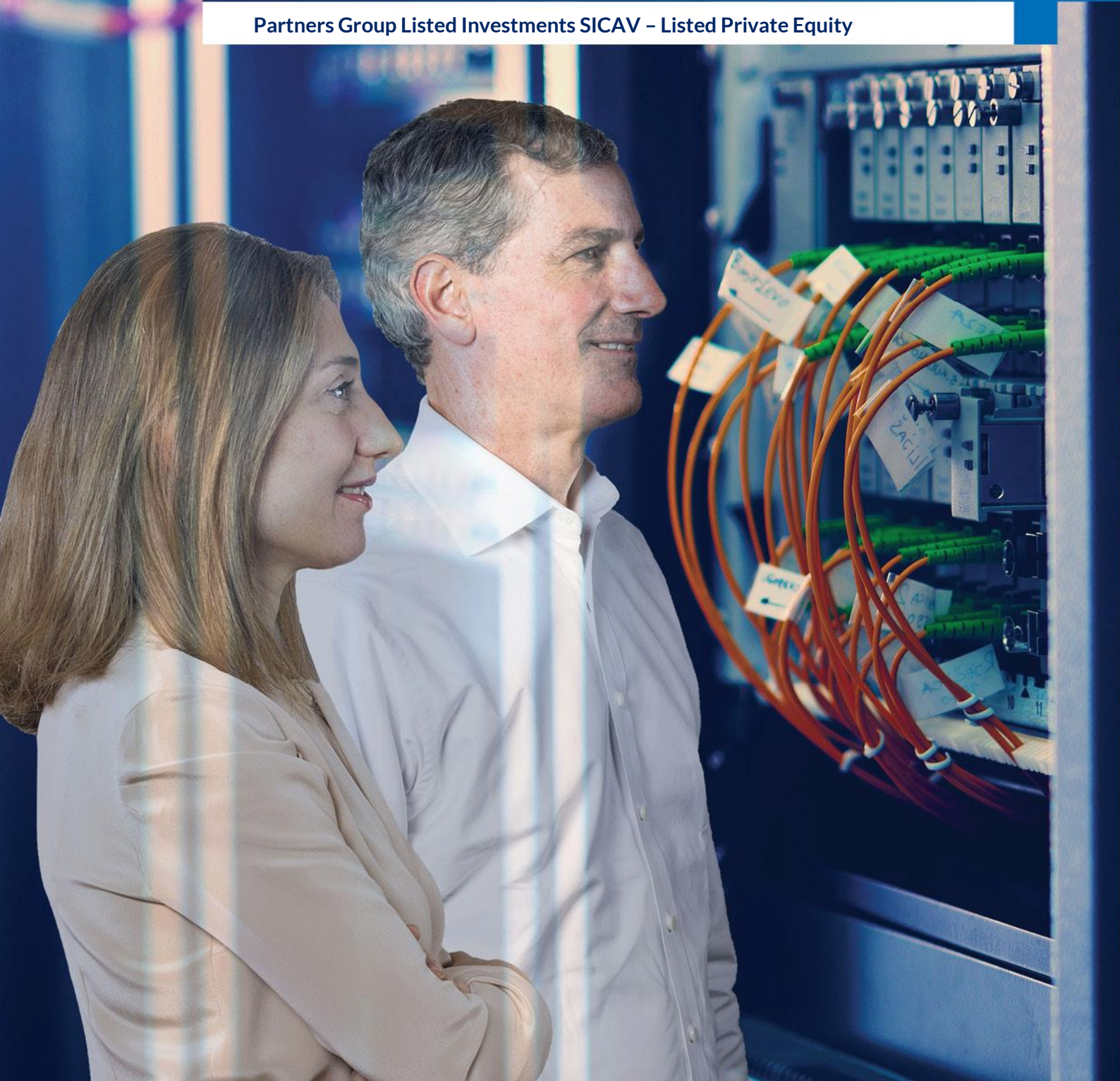
# Partners Group

REALIZING POTENTIAL IN PRIVATE MARKETS

31 MARCH 2023

## Q1 2023 Review

Partners Group Listed Investments SICAV - Listed Private Equity



## Disclaimer

This material has been prepared solely for purposes of illustration and discussion. Under no circumstances should the information contained herein be used or considered as an offer to sell, or solicitation of an offer to buy any security. Any security offering is subject to certain investor eligibility criteria as detailed in the applicable offering documents. The information contained herein is confidential and may not be reproduced or circulated in whole or in part. The information is in summary form for convenience of presentation, it is not complete and it should not be relied upon as such.

All information, including performance information, has been prepared in good faith; however Partners Group makes no representation or warranty express or implied, as to the accuracy or completeness of the information, and nothing herein shall be relied upon as a promise or representation as to past or future performance. This material may include information that is based, in part or in full, on hypothetical assumptions, models and/or other analysis of Partners Group (which may not necessarily be described herein), no representation or warranty is made as to the reasonableness of any such assumptions, models or analysis. Any charts which represent the composition of a portfolio of private markets investments serve as guidance only and are not intended to be an assurance of the actual allocation of private markets investments. The information set forth herein was gathered from various sources which Partners Group believes, but does not guarantee, to be reliable. Unless stated otherwise, any opinions expressed herein are current as of the date hereof and are subject to change at any time. All sources which have not been otherwise credited have derived from Partners Group.

## 2023 Q1 review

Partners Group Listed Investments SICAV – Listed Private Equity started positively into the new year and closed the first quarter up around 3%. During January and February, the Fund performed well, supported by improving market sentiment and solid fundamentals. Portfolio companies reported results either in line or above expectations. In March, volatility increased, which was mainly driven by persistent inflation as well as weakness in the banking sector. During the quarter, alternative asset managers performed best. They reported fundraising for 2022 which was even slightly ahead of the record year 2021. Private equity vehicles were the second-best performers as underlying portfolio companies continued to grow despite the uncertain macroeconomic environment.

Alternative asset managers were the best performers during the first quarter of 2023. Despite investors' concerns about a slowdown in fundraising and transaction activity, the segment reported solid results. Fundraising in 2022 was slightly ahead of the previous year and, despite a cooling M&A market, managers invested a similar amount of capital. Ares Management was amongst the best performers. The company benefitted from its focus on private debt strategies, which are mainly exposed to floating interest rates and benefit in a higher rates environment. Fee-paying assets under management increased by 23% in 2022, driven by US direct lending funds as well as new capital raised for its evergreen "Ares Capital Corporation". Management also continued to increase perpetual capital, i.e. funds that have no defined terms but stay with the firm, now accounting for a quarter of total assets. Another strong performer was Brookfield Asset Management, which was recently spun off from Brookfield Corp and listed as a new asset-light manager. The company reported assets under management of USD 790 billion, up 15% in 2022, and continues to benefit from its strong position in infrastructure and energy transition, where it has some of the largest funds in the industry. Overall, while fundraising and transaction activity may slow in 2023, we remain confident that large managers will continue to outperform the broader market, given their strong fundraising platforms and ability to invest at scale. We also continue to prefer managers with exposure to asset classes such as credit and infrastructure, which benefit in an environment of higher rates and higher inflation.

Private equity vehicles were the second-best performing sector. Amongst the top performers in that segment was 3i Group. The UK-based company reported solid results, showing resilient growth in most of the portfolio companies. The largest holding, Action, a European discount retailer, continues to grow impressively. The company increased sales and EBITDA by 30% and 46%, respectively, during 2022, beating the business plan targets. It also expanded its network and opened 280 new stores. Most recently, management pointed out to the continued high demand for discount products and identified over 4'000 locations for potential new stores. Despite some improvement in the sector sentiment, private equity vehicles continue to trade at higher NAV discounts compared to historical averages. Fund-of-funds are trading at particularly high discounts, given expectations of declining NAVs during 2023. On the other hand, some PE vehicles, like the technology investor Prosus, were able to structurally reduce its discount, thanks mainly to the large share buyback program.

Business Development Companies ("BDCs") were slightly down during the quarter after good performance in 2022. The sector mainly has exposure to floating interest rates and benefitted from rising rates. Owl Rock Capital was among the better performing BDCs in our portfolio. In the last quarter, the company has increased investment income by 17%, and its dividend by 6%. Moreover, the company announced a special dividend. Despite widening spreads, the portfolio marks were solid, and the net asset value increased by 1%.

During the first quarter, we adjusted our exposure to alternative asset managers and increased allocations to managers with a higher exposure to debt strategies, that benefit from continued high

interest rates. Throughout the last quarter, the valuation range of alternative asset managers widened, which we used to rotate within the segment and increase allocations to managers with more attractive valuations. Within private equity vehicles, we also adjusted our positioning and increased exposure to consumer staples at the expense of more cyclical vehicles.

## Contacts

partnersgroup@partnersgroup.com  
www.partnersgroup.com

**Zug**  
Zugerstrasse 57  
6341 Baar-Zug  
Switzerland  
T +41 41 784 6000

**Denver**  
1200 Entrepreneurial Drive  
Broomfield, CO 80021  
USA  
T +1 303 606 3600

**Houston**  
5847 San Felipe Street, Suite 1730  
Houston, TX 77057  
USA  
T +1 713 821 1622

**Toronto**  
Exchange Tower, 130 King Street West,  
Suite 1843  
Toronto, ON M5X 1E3  
Canada  
T +1 416 865 2033

**New York**  
The Grace Building  
1114 Avenue of the Americas, 41st Floor  
New York, NY 10036  
USA  
T +1 212 908 2600

**São Paulo**  
Rua Joaquim Floriano, 1120 – 11º andar  
CEP 04534-004, São Paulo – SP  
Brazil  
T +55 11 3528 6500

**London**  
110 Bishopsgate, 14th floor  
London EC2N 4AY  
United Kingdom  
T +44 20 7575 2500

**Guernsey**  
P.O. Bos 477  
Tudor House, Le Bordage  
St Peter Port, Guernsey  
Channel Islands, GY1 1BT  
T +44 1481 711 690

**Paris**  
14, rue Cambacérés  
75008 Paris  
France  
T +33 1 70 99 30 00

**Luxembourg**  
35D, avenue J.F. Kennedy  
L-1855 Luxembourg  
B.P. 2178, L-1021 Luxembourg  
T +352 27 48 28 1

**Milan**  
Via della Moscova 3  
20121 Milan  
Italy  
T +39 02 888 369 1

**Munich**  
Skygarden im Arnulfpark  
Erika-Mann-Str. 7  
80636 Munich  
Germany  
T +49 89 38 38 92 0

**Dubai**  
Dubai International Financial Center  
Level 3, Gate Village 10  
P.O. Box 125115  
Dubai, UAE  
T +971 4 401 9143

**Mumbai**  
Suite 3103 (Four Seasons Hotel)  
Plot No. 1/136, Dr. E Moses Road, Worli  
Mumbai 400 018  
India  
T +91 22 2481 8750

**Singapore**  
8 Marina View  
Asia Square Tower 1 #37-01  
Singapore 018960  
T +65 6671 3500

**Manila**  
18/F Net Park Building  
5th Avenue Corner 26th Street  
Bonifacio Global City, Taguig  
1634 Metro Manila  
Philippines  
T + 63 2804 7100

**Shanghai**  
Unit 1904-1906A, Level 19  
Tower I, Jing An Kerry Center  
No. 1515 West Nanjing Road  
Jing An District, Shanghai 200040  
China  
T +8621 2221 8666

**Seoul**  
25th Fl. (Gangnam Finance Center,  
Yeoksam-Dong) 152 Teheranro  
Gangnam-Gu, Seoul 135-984  
South Korea  
T +82 2 6190 7000

**Tokyo**  
Daido Seimei Kasumigaseki Bldg. 5F  
1-4-2 Kasumigaseki, Chiyoda-ku  
Tokyo 100-0013  
Japan  
T +81 3 5532 2030

**Sydney**  
Level 32, Deutsche Bank Place  
126 Phillip Street  
Sydney NSW 2000  
Australia  
T +61 2 8216 1900